



PICTURE A BETTER JOBSITE

OxBlue Construction Cameras



OxBlue
Robotic PTZ
Megapixel Camera

Contents:

- The OxBlue Advantage
- Redefining Easy
- Construction Camera Systems
- Solar Power System
- Professional Time-Lapse Productions Services
- Simple Pricing
- About Us
- A Few of Our Clients

“The bottom line is this: Members of my team are 5 hours away from the jobsite...I have subs in four states around West Virginia. Yet we can all log in and look at the site together. This makes the OxBlue cameras a simply great communications resource.”



Mark Hartman, Project Manager,
Massaro Corporation

Massaro

Picture a Better Jobsite

It's true of every successful project: The more visibility into what's happening at the jobsite at any given moment, the greater your control and agility.

The OxBlue Advantage

Document construction progress and communicate real-time project status with a simple-to-use, rugged and reliable system. OxBlue leads the construction-camera industry with extremely high-resolution image quality, flexible cellular transmission and a full-service approach. All camera hardware, cellular data connections, servers, software and professional time-lapse production expertise are provided in one complete package.

“We were surprised at how many unexpected benefits we gained by using an OxBlue camera on this job: It recorded the weather, which helped justify weather delays. It recorded major milestones, which helped with scheduling. . . We were working 24/7 on this project, and OxBlue enabled me to wake up in the morning, look at the camera, and see what happened overnight.”

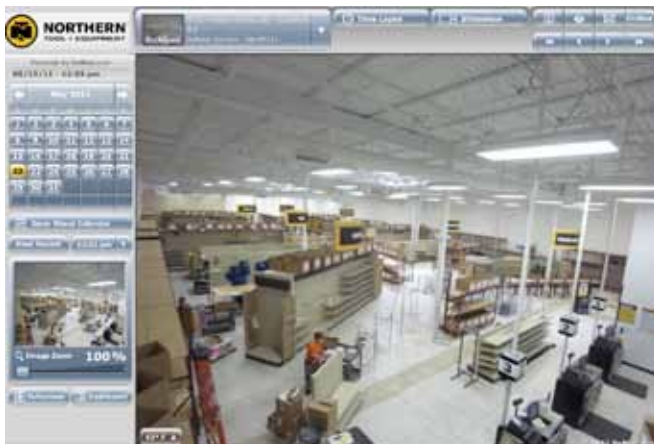
FLATIRON MANSON Bob Edwards, Assistant Project Manager, Flatiron Manson Adjoint Venture



For the NDOT, the cameras on one of the world's longest arch bridges improved trust with stakeholders and increased accountability for the department and contractors.



Massaro Corp. was able to validate construction delays; one due to a neighboring building fire which resulted in a portion of that structure landing in the middle of Massaro's jobsite.



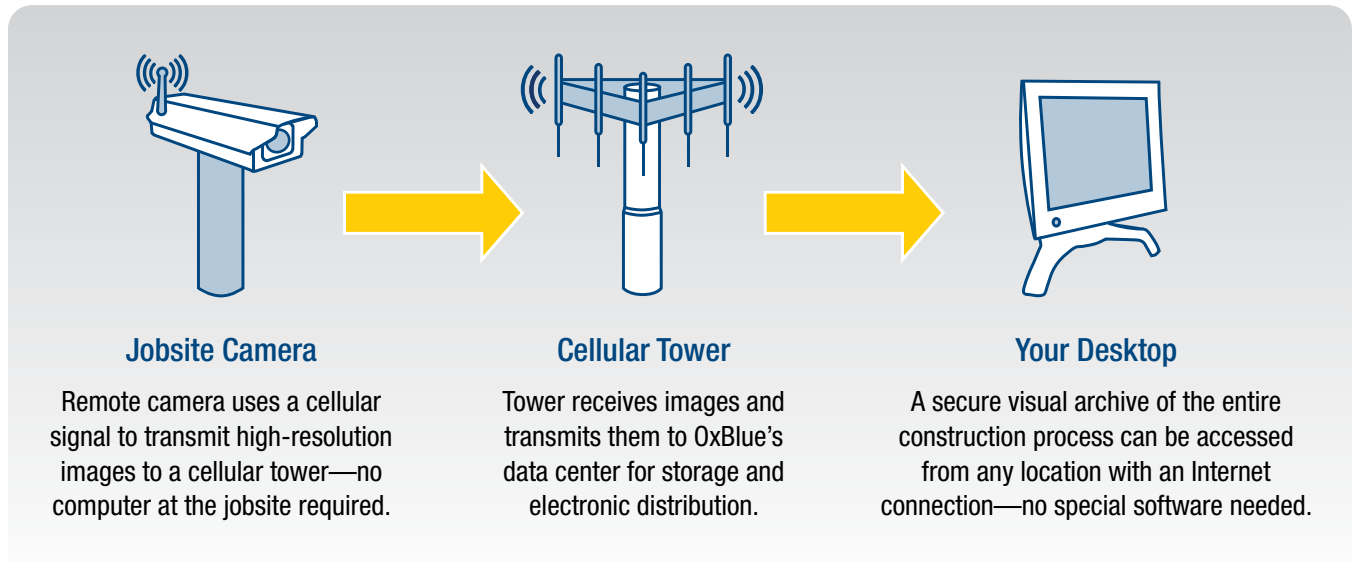
Using cameras on the interior of a build provides Northern Tool the same benefits as using them on the outside. Teams can plan and adjust schedules more efficiently, address issues on the site as they unfold and realize substantial savings on travel time and expenses.



One of the ways Flintco, LLC Project Manager, Tony Caldwell uses the OxBlue camera on this Memphis International Airport jobsite is to review recent historical data to make immediate changes in real time to keep pace with the current situation.

Redefining Easy

We handle every detail, from the camera at the construction site to the Web page where you view the site.



Construction Camera Systems

- Available in 4, 6, 8 and 12 megapixels
- View images or HD time-lapse movies from your desktop, laptop—or even your iPhone or iPad
- Wireless cellular transmission—no jobsite Internet connection required
- Available as either a robotic PTZ or fixed unit
- Simple to install and activate
- Self-contained turnkey system
- Rugged, weather-proof enclosure with environmental controls
- Cameras covered by lifetime warranty—PTZ component covered by one year warranty

Solar Power Systems

- Pre-assembled, pre-configured, pre-tested
- Built for reliability and ease of set-up
- Engineered for more than 5 days of solar autonomy
- Qualifies for 30% federal tax credit

Professional Time-Lapse Production Services

OxBlue is the expert at producing professional-quality time-lapse movies. This is a great way to monitor progress, or track backward to discover when an issue occurred. Time-lapse movies are also a great public relations tool to demonstrate the evolution of a project.



Simple Pricing

OxBlue offers a wide range of pricing options, customized to meet the needs of the construction industry.

Our standard pricing features a one-time, all-inclusive hardware cost and a charge for the service—billed only when you use it to transmit images from the jobsite. Other options for lump-sum pricing and discounts are also available.

“The team is spread out all over the county, but traveling to the site was minimized because we could all visit the site from our own offices any day, any time.”



Patty Mamola
Bowling/Mamola Group

SATISFACTION:

97% of OxBlue's customers are repeat customers.

About Us

OxBlue serves a diverse set of clients within the construction and real estate industries. Whether they are interested in a national construction camera program to assist management and reduce costs or simply augmenting a marketing effort, OxBlue is dedicated to ensuring the success of our clients.

Our clients include numerous Fortune 500 companies, and our cameras are used by more than 30% of ENRs Top 400 Contractors. From large government projects and stadiums to commercial out-lots and private residences, OxBlue is proud to serve the construction industry.

Engage Project Success

Contact OxBlue and build real collaboration on your jobsite.

Measuring Success

One can only control what one can measure:

- Cost
- Schedule
- Quality
- Labor
- Materials
- Weather
- Safety
- Risk

Clarity in these eight key variables enables comprehensive insight to empower effective collaboration and decision making.

A few of our clients:

General Contractors

Clark Construction Group, LLC
Skanska
Turner

Hotels/Casinos/Resorts

Harrah's Casinos
Lakes Entertainment
Marriott

Bridges/Transportation

Nevada DOT
Caltrans
BC Ministry of Transportation

Energy/Power/Oil & Gas

Chevron
BP Solar
Chesapeake Energy

Retail

Wal-Mart
Limited Brands
Northern Tool

Healthcare

Kaiser Permanente
Children's Healthcare
Miami Valley Hospital

Education

Northeastern University
University of Chicago
Napier University - UK

Industrial

Prologis/AMB
FedEx
Tipmann Group

